



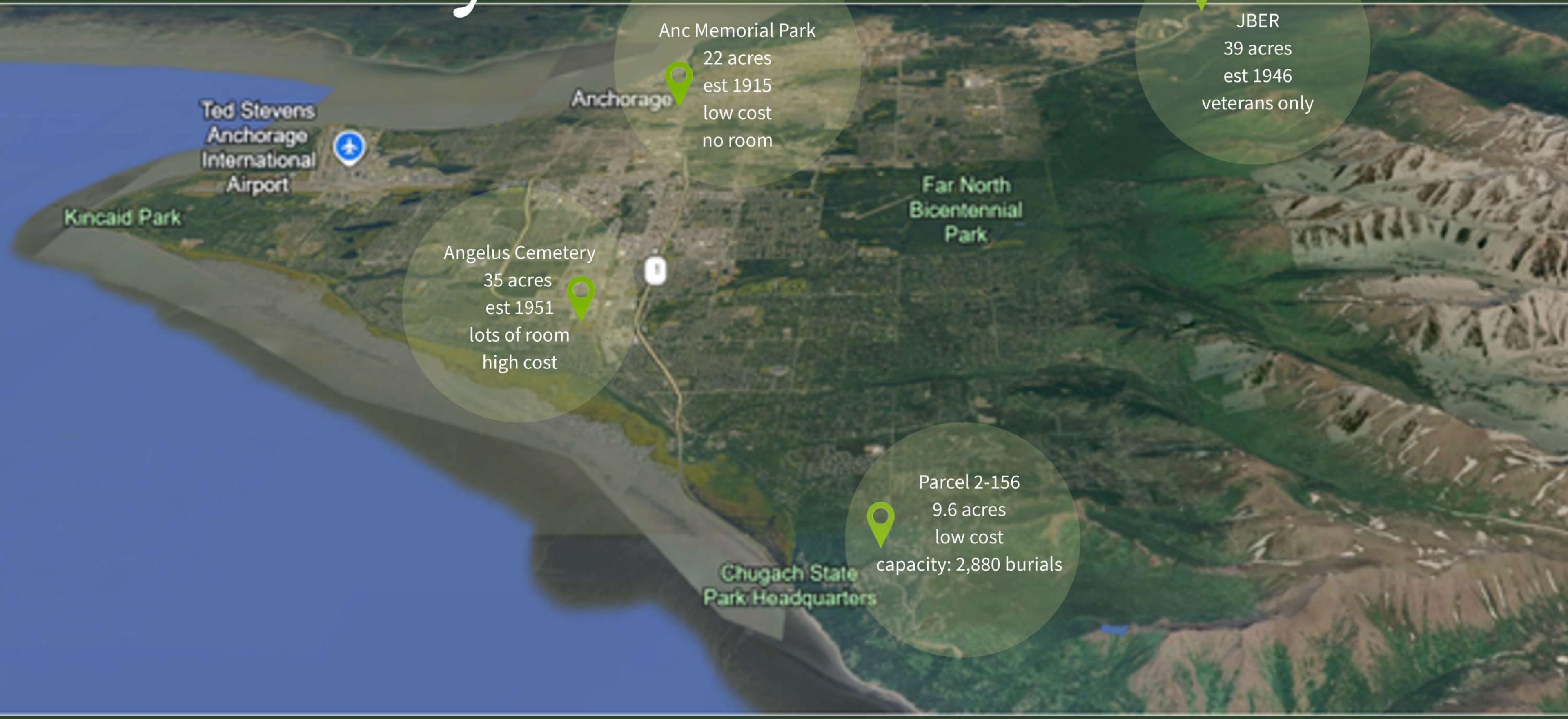
ALASKA NATURAL BURIAL

01/23/2026 Heritage Land Bank Presentation
Rachel Bernhardt, Board President

OVERVIEW

- Cemetery Infrastructure
- Natural Burial
- HLB Parcel 2-156
- Compatibility
- Plan

Cemetery Infrastructure



Anc Memorial Park

22 acres
est 1915
low cost
no room

JBER

39 acres
est 1946
veterans only

Angelus Cemetery

35 acres
est 1951
lots of room
high cost

Far North
Bicentennial
Park

Parcel 2-156

9.6 acres
low cost
capacity: 2,880 burials

Chugach State
Park Headquarters

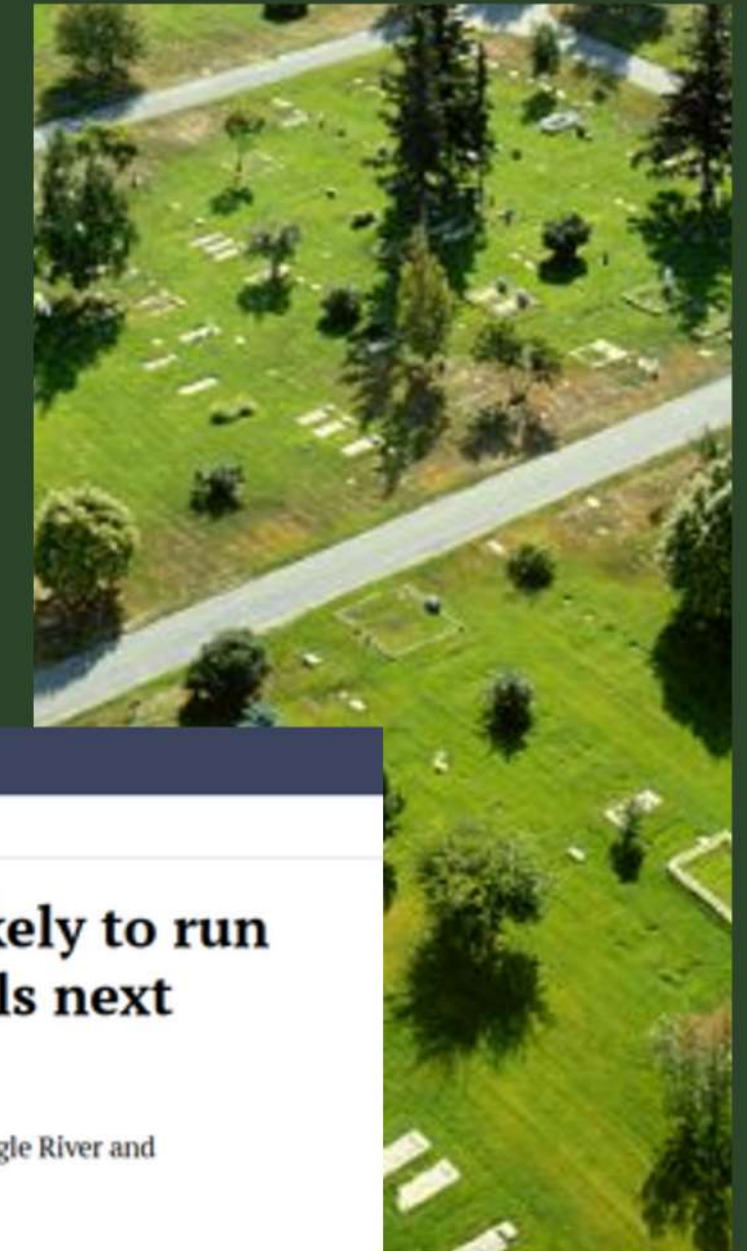
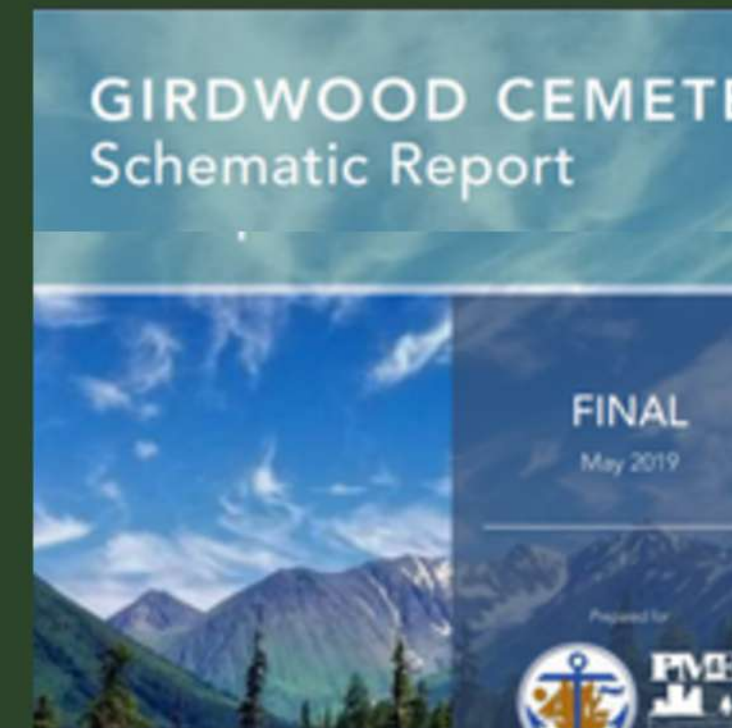
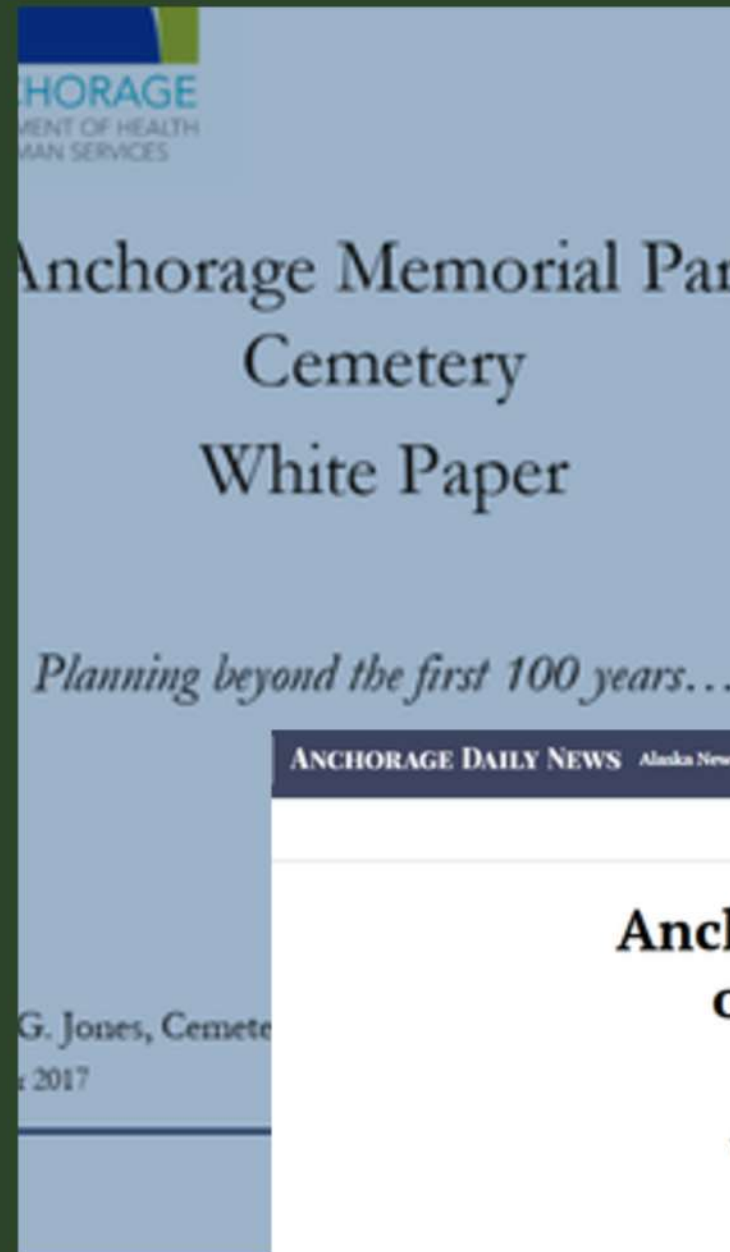
Ted Stevens
Anchorage
International
Airport

Kincaid Park

Anchorage

Cemetery Infrastructure

- Cemeteries are critical pieces of urban infrastructure
- Running out of affordable burial space – white paper
- Muni priorities haven't aligned with community's growing need for affordable cemetery space
 - Eagle River/Girdwood
 - 2024 bond failed to pass: no funds for Anchorage Memorial Park improvements and the new projects are stalled
- 2024 HLB RFP for cemetery



NATURAL BURIAL



What is natural burial

What is buried

Materials that are readily biodegradable
(no concrete, plastics, resins, metal, formaldehyde)

Grounds maintenance

Might include habitat cultivation,
invasive species mitigation (not turf maintenance)

Community use

Recreation, access to green space

...in Anchorage...

Fulfilling a community need (for affordable burial space)
that Anchorage Memorial Park can no longer meet



Natural burial is *not*



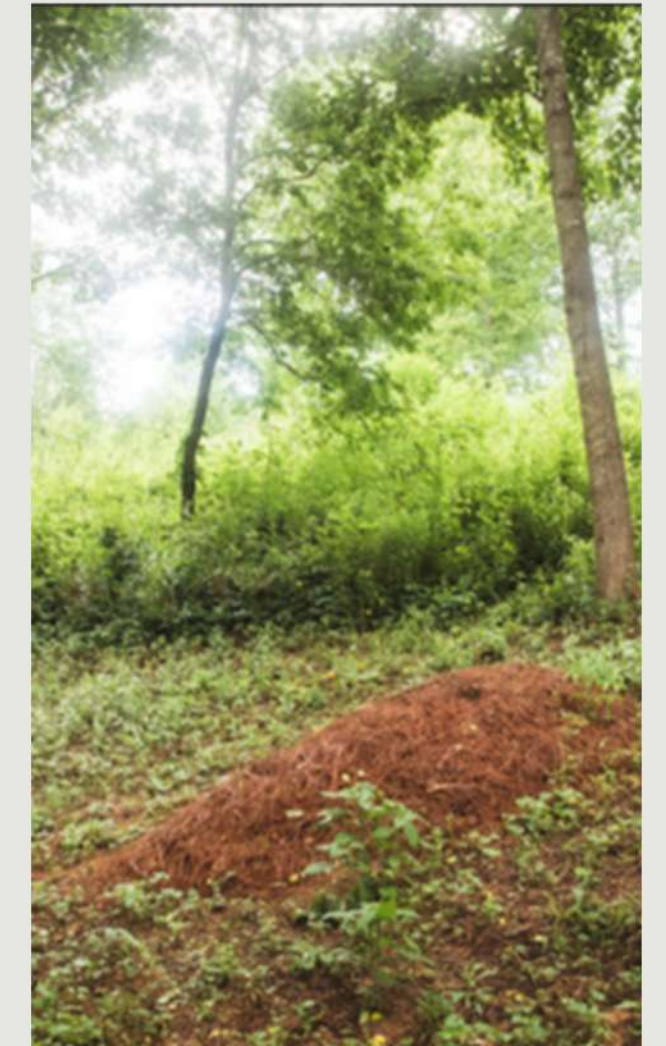
Natural burial is





low-density,
natural burial

- 300 per acre maximum



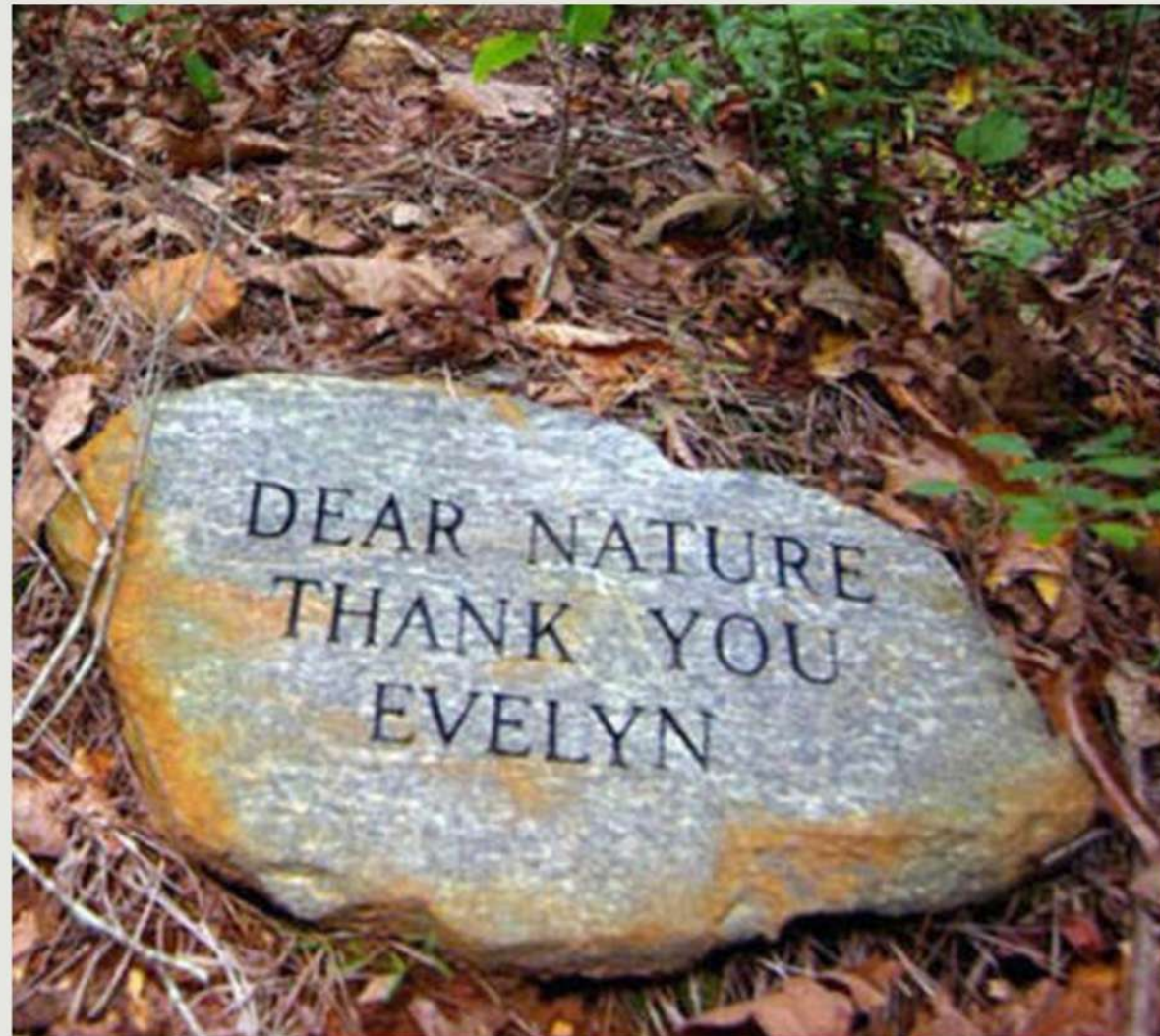
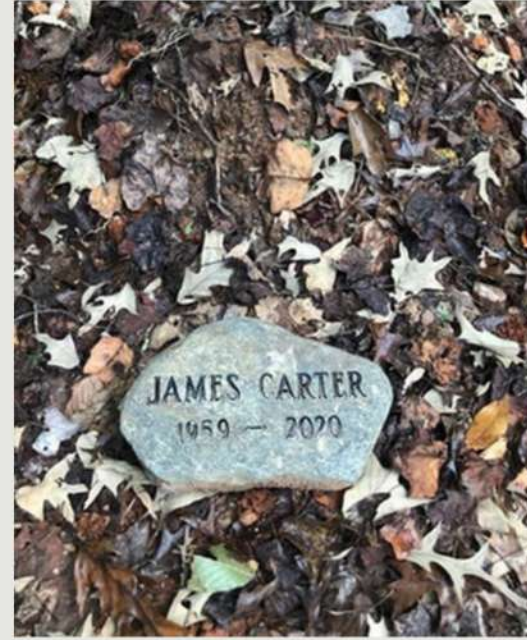


low-tech,
low-impact, low cost



markers & monuments

- Limiting marker type & size
- Memorial plantings of approved species





multi-functional urban space

- cemetery infrastructure
- wildlife habitat
- green space for recreation

HLB PARCEL 2-156



R&M Consultants 2013

Vegetation Description

Native plant species:
paper birch, white
spruce, quaking aspen,
bluejoint grass, alder,
devil's club, spirea,
dogwood, bluebell



Invasive species:
dandelion
(AKEPIC* ranking
58) and orange
hawkweed (AKEPIC*
ranking 79)

Existing Use

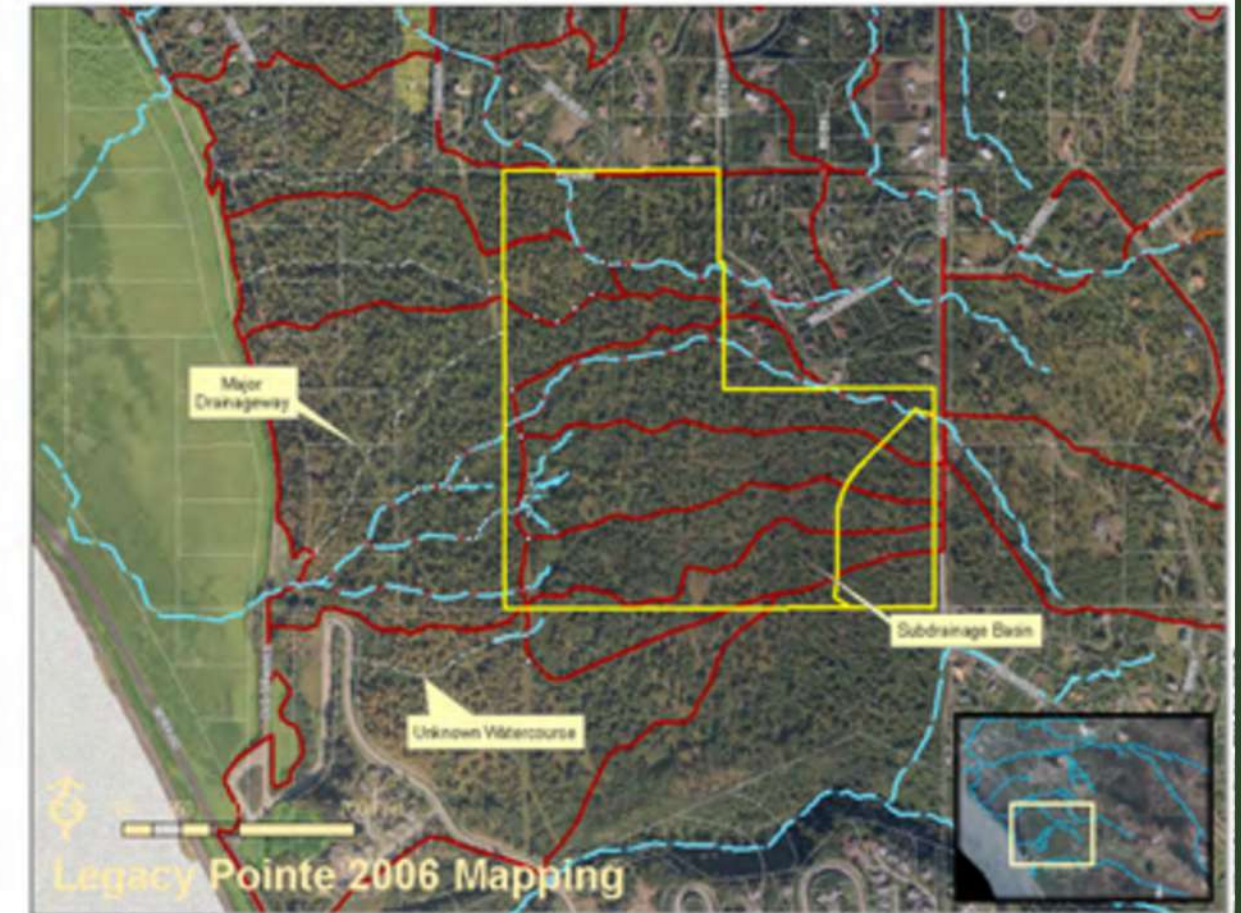
- Recreation and green space for area residents
- Important wildlife corridor, especially for moose and bear



Hydrogeological Conditions

- No wetlands, no wells, divergent runoff
- Slopes
- Well drained soil overlaying gravelly glacial till
- Some areas of shallow bedrock

Figure 1: Legacy Pointe (Forest Heights LLC) Vicinity



Alaska Testlab Soils Report 1977
 MOA Soils logs 1983
 Shannon & Wilson Geotechnical Report 1998
 Terrasat Hydrogeologic Eval 2005
 Shaw Wetland Delineation Report 2006
 Watershed Management Services Report 2006
 R&M Consultants Geotechnical Memo 2025

Table 6: Test pit characterization summary

Test Pit Location	Easy Excavation Zone (feet bgl)	Hard Excavation Zone (feet bgl)	Trench Stability and groundwater flow conditions
RPCS-TP-01	0 - 5.5	>5.5	<ul style="list-style-type: none"> • Pit excavation stayed open during excavation. No collapse was observed during fieldwork. • Groundwater encountered in RPCS-TP-03 and RPCS-TP-04 was observed to be slowly seeping into the bottom of the pit at the soil-rock interface.
RPCS-TP-02	0 - 4.5	>4.5	
RPCS-TP-03	0 - 5.5	>5.5	
RPCS-TP-04	0 - 8.0	>8.0	
RPCS-TP-05	0 - 2.5	>2.5	
RPCS-TP-06	0 - 4.5	>4.5	
RPCS-TP-07	0 - 2.0	>2.0	
RPCS-TP-08	0 - 3.5	>3.5	



Alignment with Regional, District, and Neighborhood Planning



✓ Anchorage Comprehensive Plan

✓ Hillside District Plan

✓ Potter Valley Land Use Analysis

✓ Anchorage Wetlands Management Plan

✓ Rabbit Creek Community Council

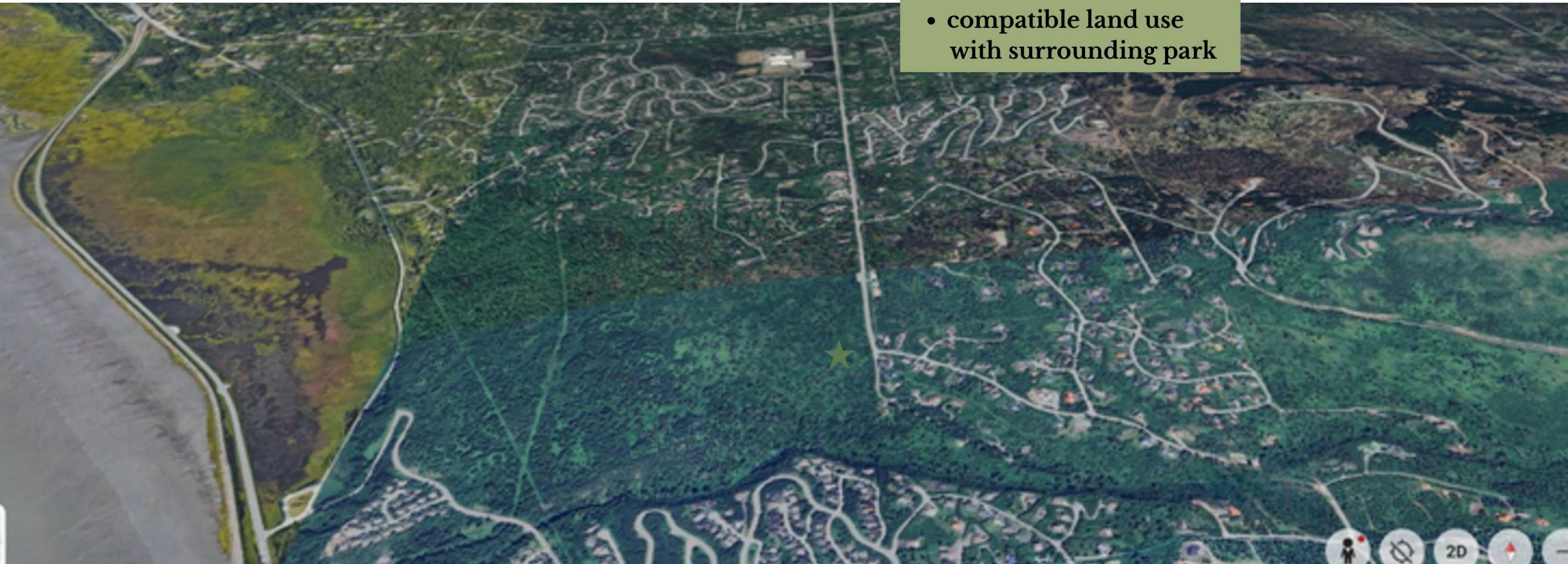
Consensus:

- 2-156 is unsuitable for residential development
- Value in maintaining the area's rural character, preserving established vegetation, and public access to open space

Compatibility

why this project works for this parcel

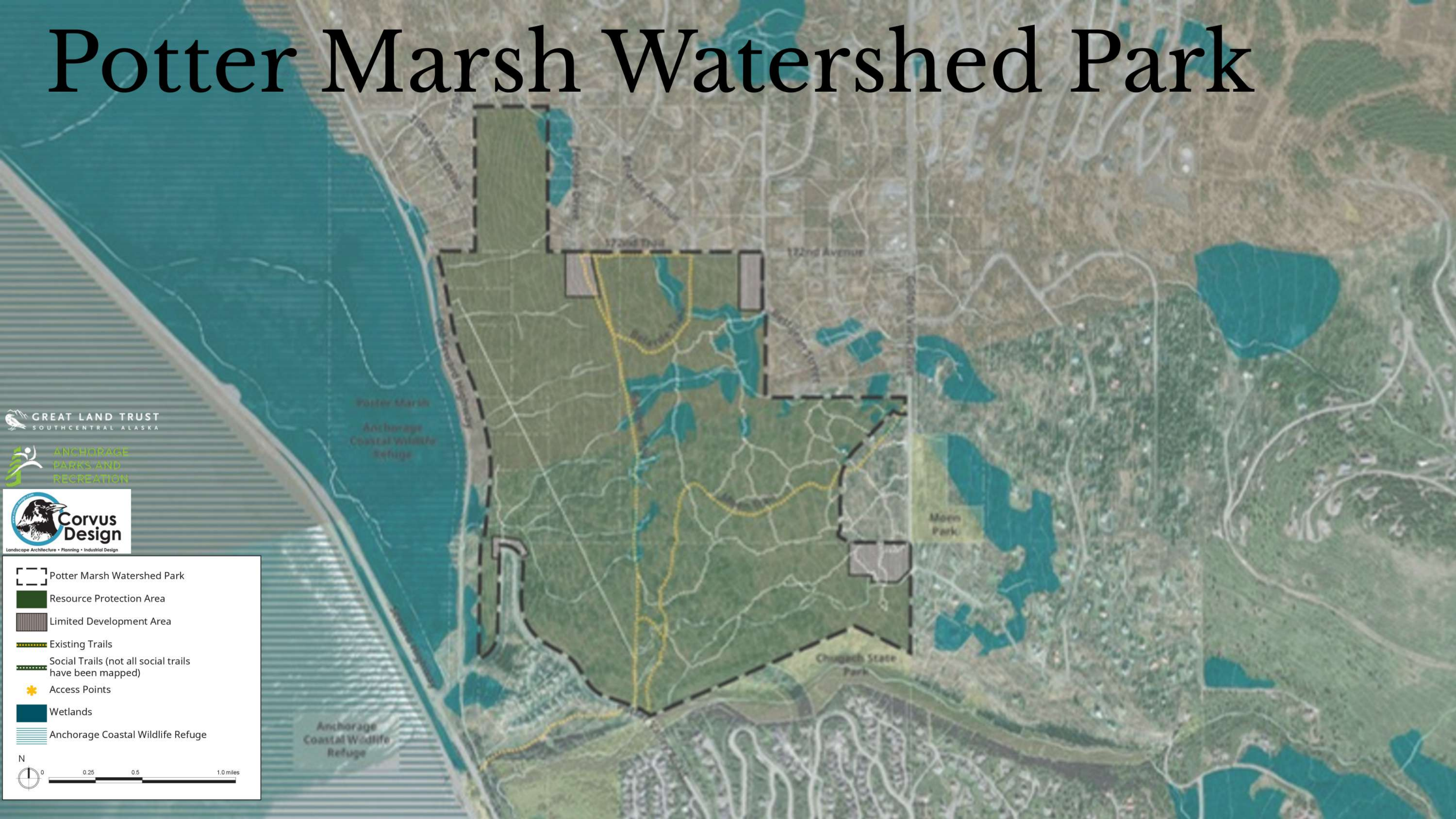
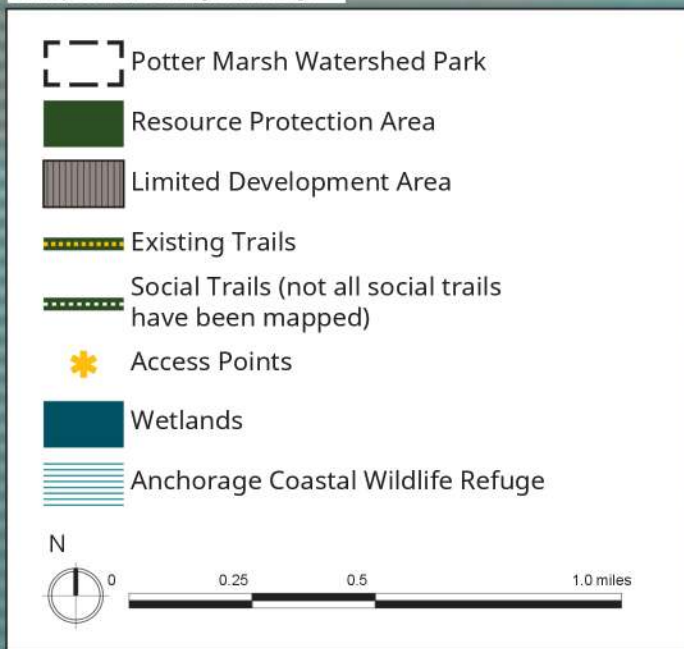
- slopes & drainage
 - wetlands
 - zoning
 - road accessibility
 - neighborhood approval
 - ADF&G
-
- compatible land use with surrounding park



Potter Marsh Watershed Park

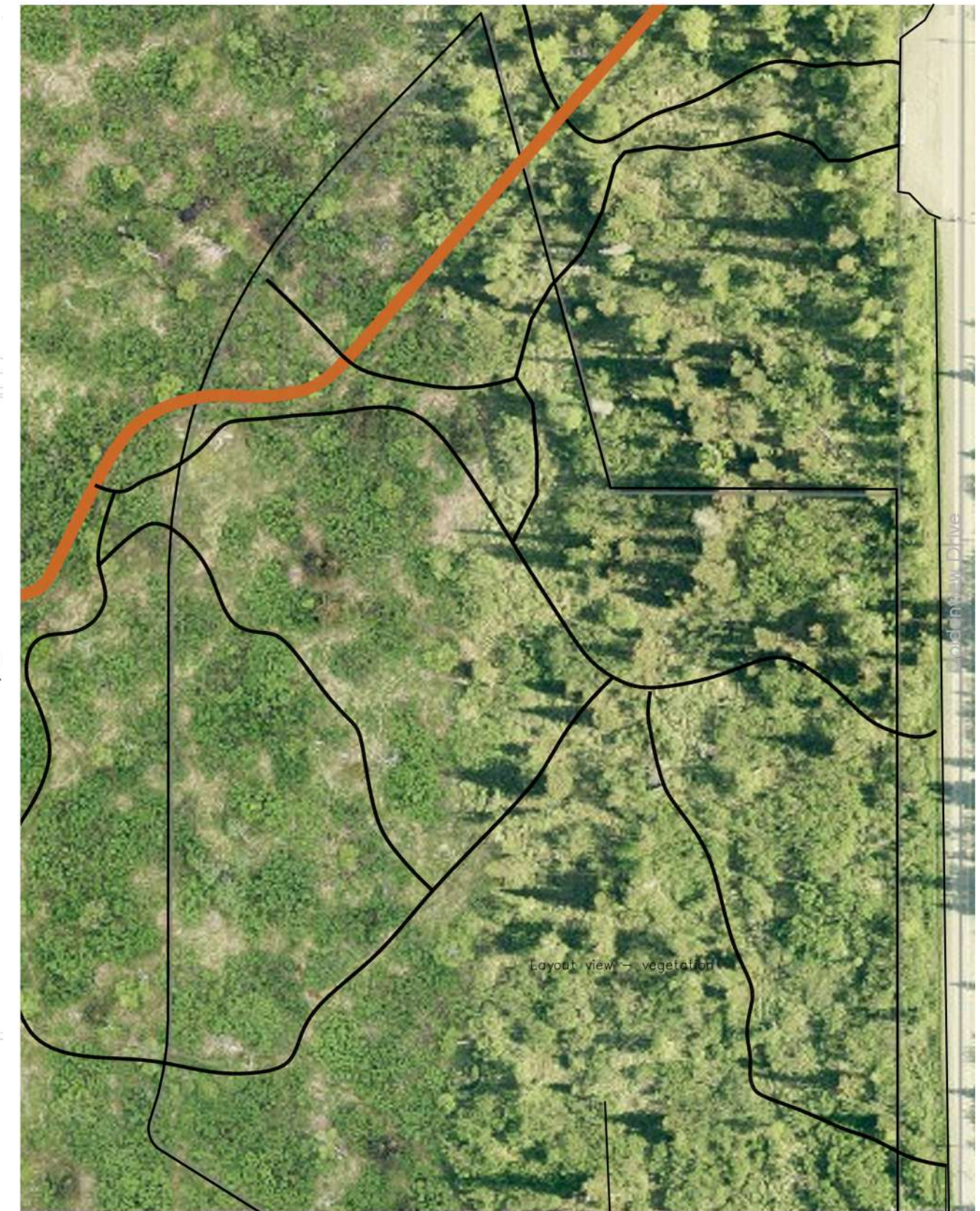
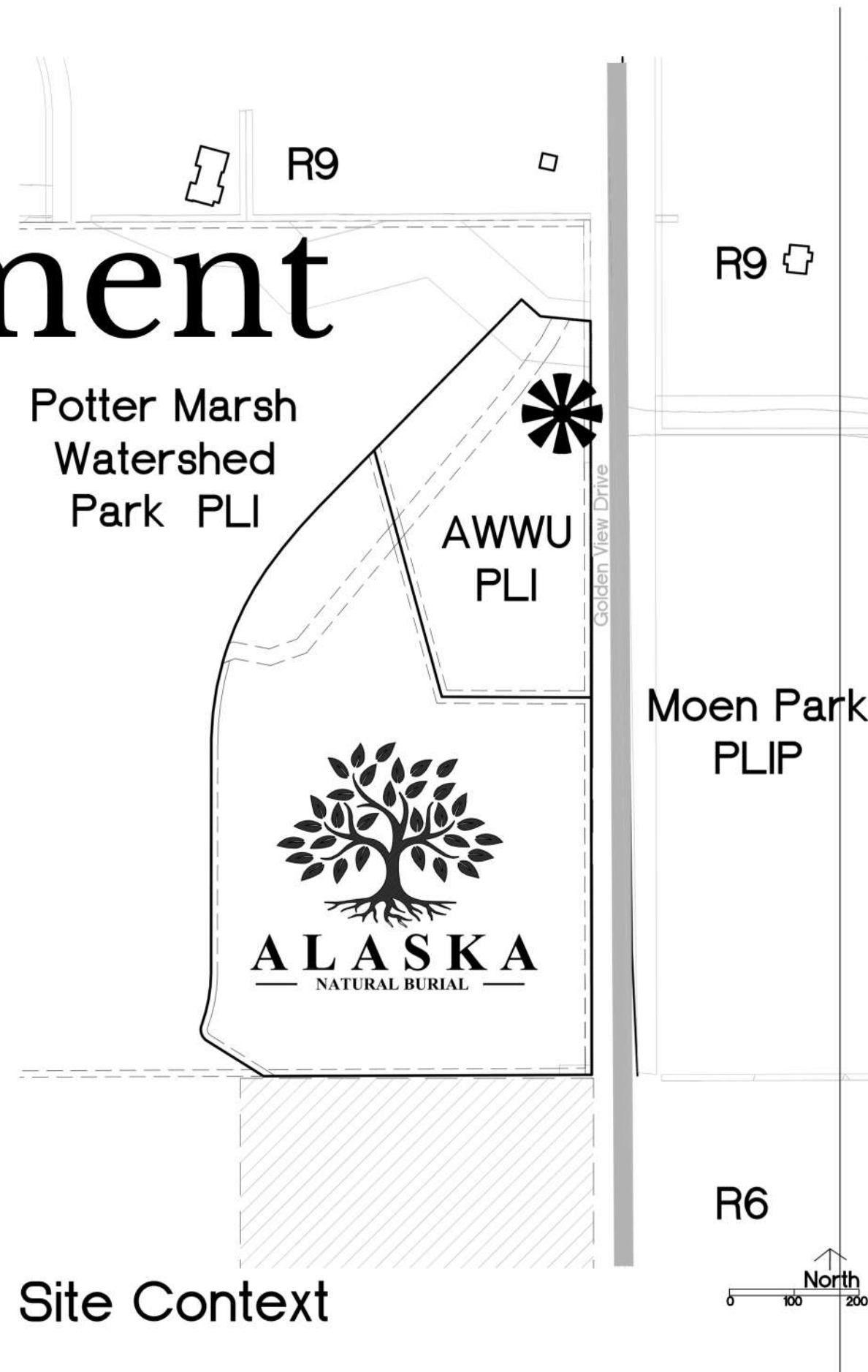
GREAT LAND TRUST
SOUTHCENTRAL ALASKA

ANCHORAGE
PARKS AND
RECREATION

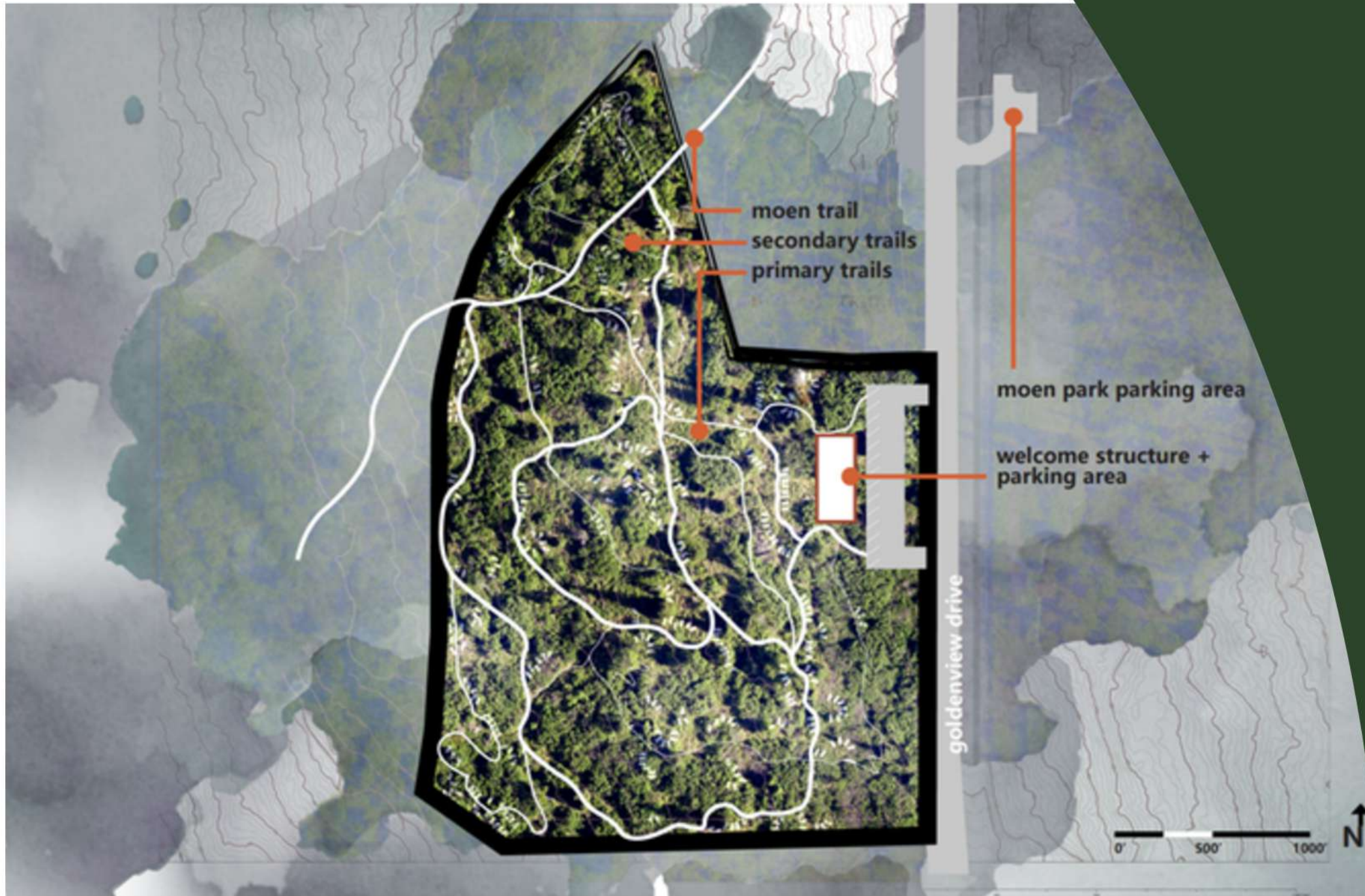


Phased Development

- shared trail & parking infrastructure
- consistency in trail construction & maintenance practices
- improving existing trails vs new construction



Alaska Natural Burial is...



- the highest and best use
- nonprofit solution for providing the community with cemetery infrastructure
- unburdening the MOA with cemetery development and operational costs
- piloting the idea that cemeteries can truly serve as multifunctional community spaces and wildlife habitat



ALASKA NATURAL BURIAL

www.AlaskaNaturalBurial.org
Rachel@AlaskaNaturalBurial.org
907-360-7136

Natural Burial Photo Credits

Prairie Creek Conservation Cemetery
The Forest Conservation Burial Ground
Carolina Memorial Sanctuary
Kings Mountain Preserve
Ramsey Creek Preserve
Foxfield Preserve
Larkspur Conservation
Kokosing Nature Preserve